



**City of Madison
GPS Project 2002**

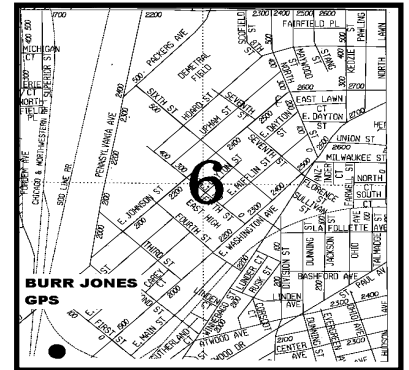
Station ID. 010

Station Name: BURR JONES GPS

PID: DG4237

Section 06 Town 07 North, Range 10 East.
City of Madison, County of Dane, State of Wisconsin

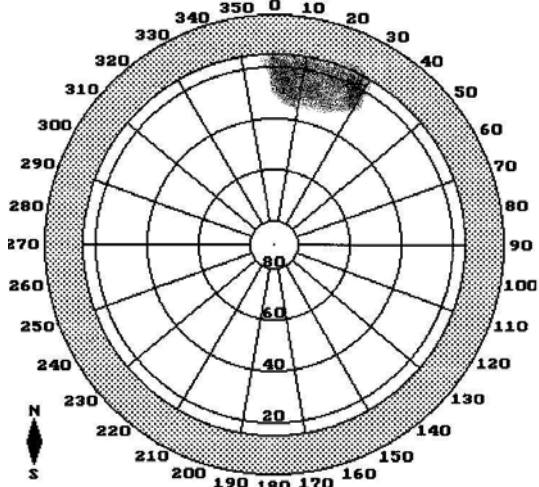
Observer: Jamey Reid; Date of observation October 16, 2002
To receive additional information pertaining to this station, go to the
NGS web site. http://www.ngs.noaa.gov/cgi-bin/ds_desig.pr1



Station is reported to be First order horizontal and Third order, Class II Ellipsoid. Feet are in US Survey Foot

NAD 83 (1997)		SPC WI S		WCCS Dane Zone 83 1997	
Latitude	43 05 30.82363 (N)	Y (meters)	121,497.499	Y (feet)	489,106.79
Longitude	089 21 44.57065 (W)	X (meters)	651,911.287	X (feet)	826,985.67
NAVD 88	259.6 (meters)	Scale Factor.	0.99994704	Converg.	00 02 27.1
Ellip. Height	225.28 (meters)	Converg.	+0 26 17.2	Scale	0.999996137
Geoid 03 Ht.	-34.34 (meters)	Elev. Factor	0.99996467	Elevation by Leveling = 851.69 ft	
		Combine Factor	0.99991171	Stations V107 & 2V03 were used to obtain the NAVD 88 value	

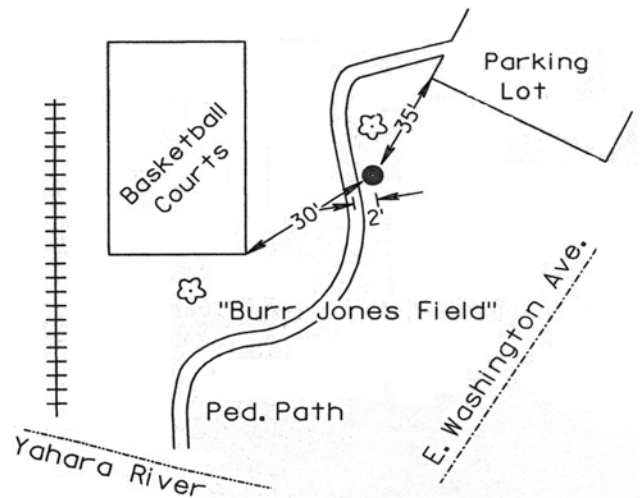
Sky Plot



**Not to Scale
NORTH**



Sketch



DESCRIPTION:

TO REACH THE STATION FROM THE INTERSECTION OF SOUTH 30 AND US 151 (E. WASHINGTON AVE.), TRAVEL SOUTHWEST ALONG US 151 FOR 2.6 KM (1.6 MI) TO THE ENTRANCE TO BURR JONES PARK. TRAVEL WEST TO THE SOUTHWEST CORNER OF THE PARKING LOT FOR BURR JONES PARK. THE STATION IS LOCATED APPROXIMATELY 10.7 M (35 FT) SOUTH OF SOUTH EDGE OF THE PARKING AREA AND 9.1 M (30 FT) NORTHEAST OF THE SOUTHEAST CORNER OF THE BASKETBALL COURTS AND APPROXIMATELY 0.6 M (2 FT) EAST OF THE BIKE PATH. STATION IS STAMPED BURR JONES GPS ON THE ACCESS COVER.