



**City of Madison  
GPS Project 2002**

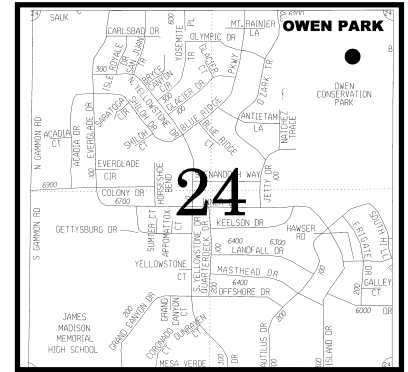
Station ID. 004

**Station Name: OWEN PARK GPS**

**PID: DG4235**

Section 24 Town 07 North, Range 08 East.  
City of Madison, County of Dane, State of Wisconsin

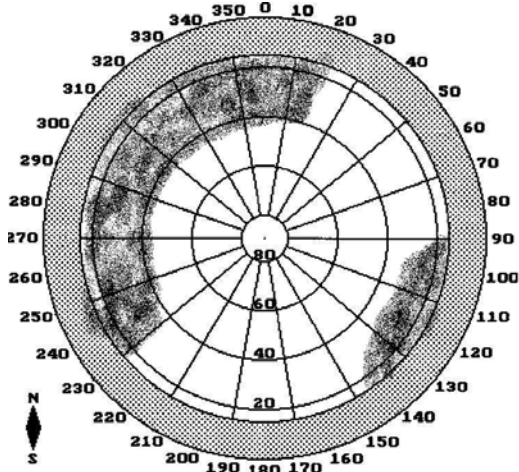
Observer: Dean Baker; Date of observation October 16, 2002  
To receive additional information pertaining to this station, go to the NGS web site. [http://www.ngs.noaa.gov/cgi-bin/ds\\_desig.pr1](http://www.ngs.noaa.gov/cgi-bin/ds_desig.pr1)



Station is reported to be First order horizontal and Third order, Class II Ellipsoid. Feet are in US Survey Foot

NAD 83 (1997)		SPC WI S		WCCS Dane Zone 83 1997	
Latitude	43 04 22.99465 (N)	Y (meters)	119,334.612	Y (feet)	482,240.11
Longitude	089 29 12.24160 (W)	X (meters)	641,800.206	X (feet)	793,761.52
NAVD 88	319.1 (meters)	Scale Factor.	0.99994886	Converg.	-00 02 38.6
Ellip. Height	284.85 (meters)	Converg.	+0 21 09.6	Scale	0.999996063
Geoid 03 Ht.	-34.25 (meters)	Elev. Factor	0.99995533		
		Combine Factor	0.99990419		

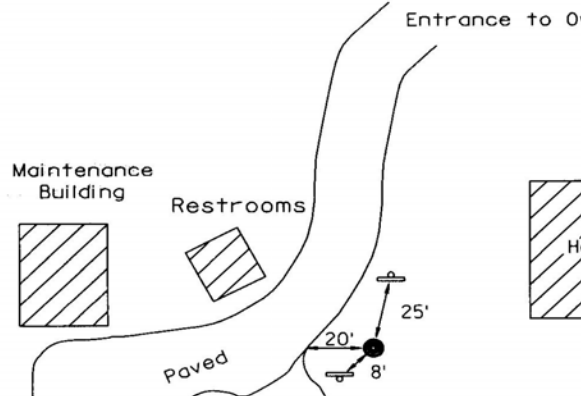
**Sky Plot**



**Not to Scale  
NORTH**



**Sketch**



**DESCRIPTION:**

TO REACH THE STATION FROM THE INTERSECTION OF US 12 AND 14 AND OLD SAUK ROAD, TRAVEL EAST ON OLD SAUK ROAD FOR 2.9 KM (1.8 MI) TO THE ENTRANCE TO OWEN PARK. TRAVEL SOUTH ON THE DRIVEWAY ENTRANCE TO THE PARKING AREA FOR 0.2 KM (0.15 MI). THE STATION IS LOCATED 6.1 M (20 FT) NORTHEAST OF THE NORTHEAST CORNER OF THE PARKING AREA AND IS APPROXIMATELY 7.6 M (25 FT) SOUTH OF A PARKING SIGN, AND 2.4 M (8 FT) NORTHEAST OF A PARK INFORMATIONAL SIGN. THE STATION IS LOCATED ON THE EAST EDGE OF THE GRASS AREA. STATION IS STAMPED OWEN PARK GPS ON THE ACCESS COVER.