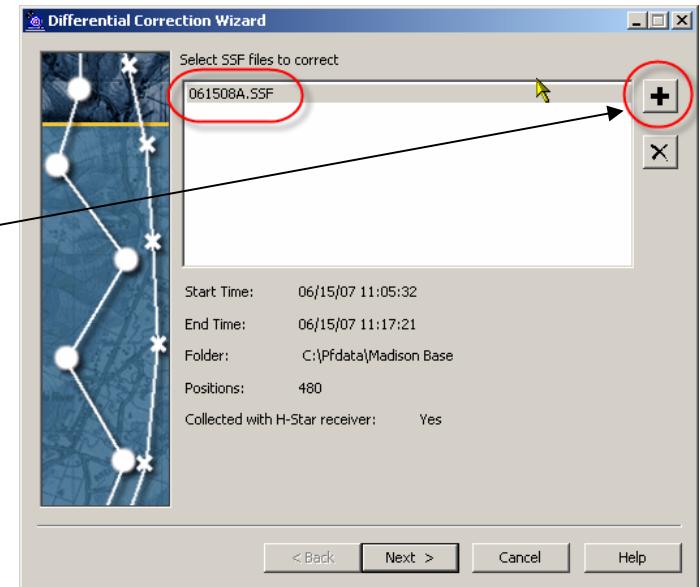
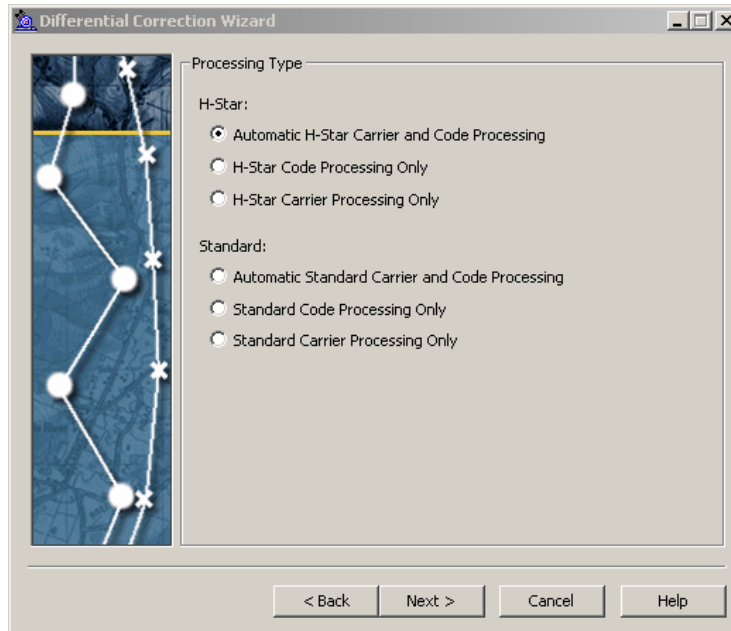


## Create a NEW Base station properties for the City of Madison Base station April 2007

1. Run Trimble Pathfinder Office and open SSF file or files to be corrected
2. Select menu option **Utilities** → **Differential Correction**
3. Be sure you have an .SSF file or files selected for correction, then press **NEXT**  
  
---if no file or files appear, press the “**Plus sign**” to add files, navigate to the SSF then press **OPEN**
4. If your GPS receiver is H-star capable (GeoXH, ProXH etc), select *Automatic H-Star...* else if your GPS receiver is not H-star capable (ProXR, ProXRS, GeoXT, ProXT etc.) select *Automatic Standard...* and press **NEXT**

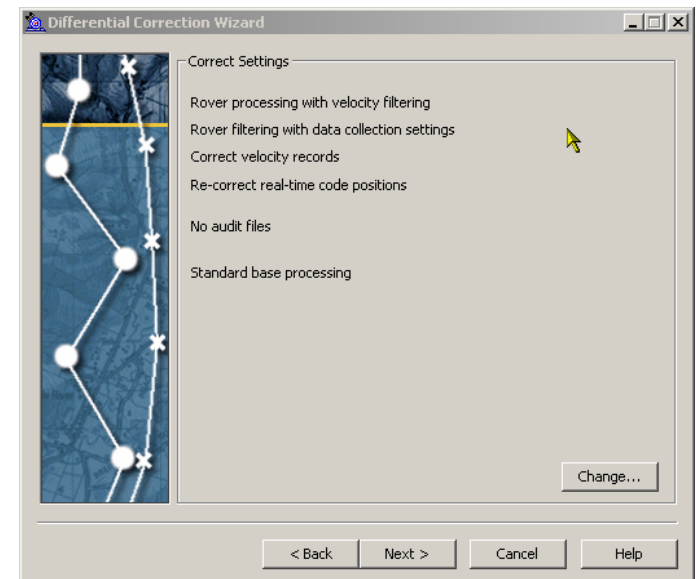


STEP 3 IMAGE



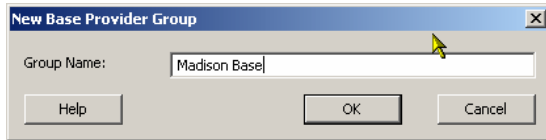
STEP 4 IMAGE

5. Set the “Correct Settings” appropriately then press **NEXT**

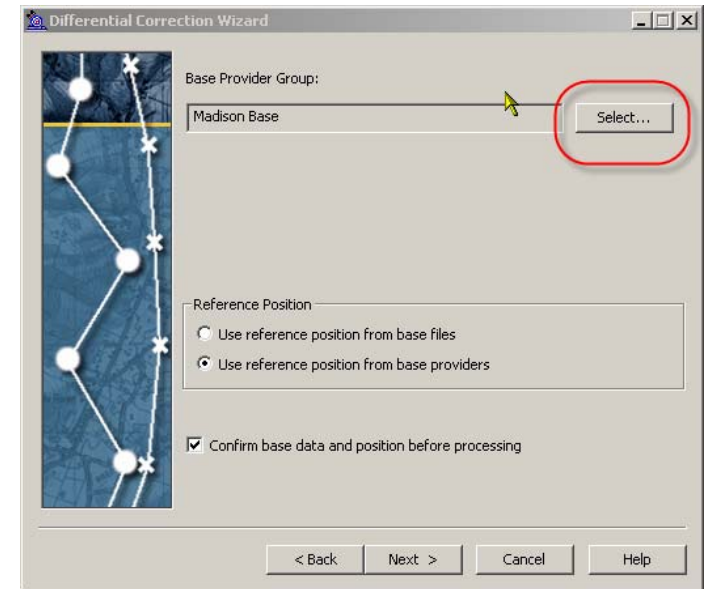
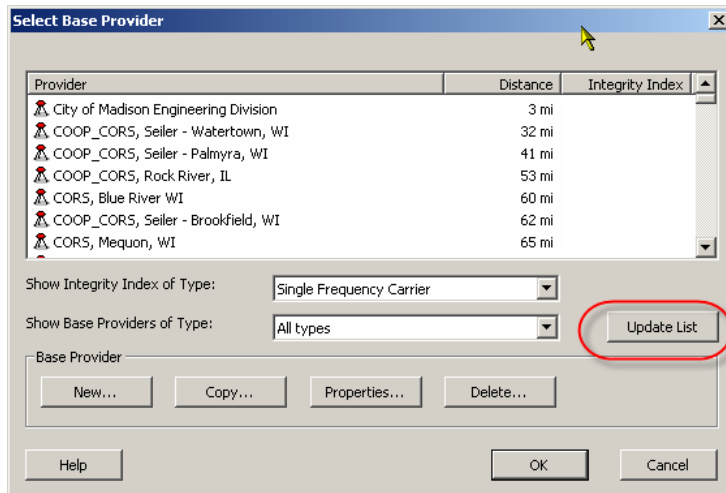
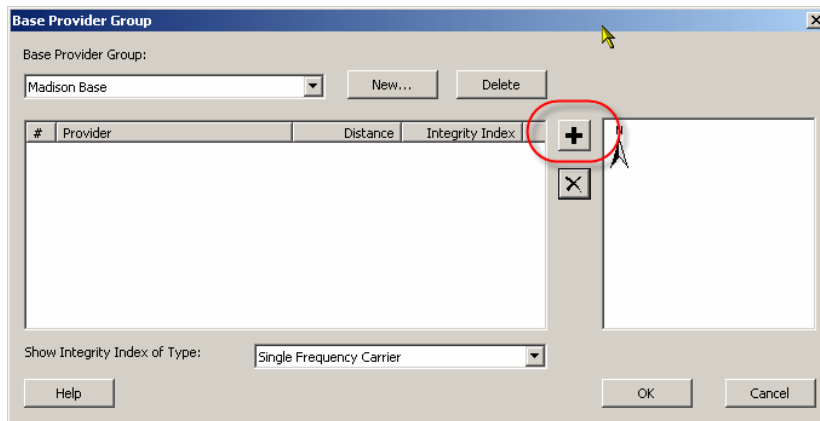


STEP 5 IMAGE

- If running H-Star- at Base Provider Group dialogue box, press **Select**
- Set Base provider Group, press **NEW**, name the group *MADISON BASE* then press **OK**

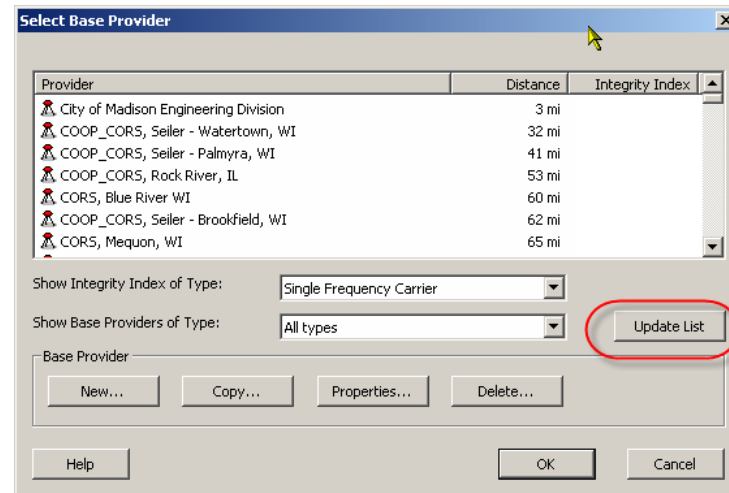
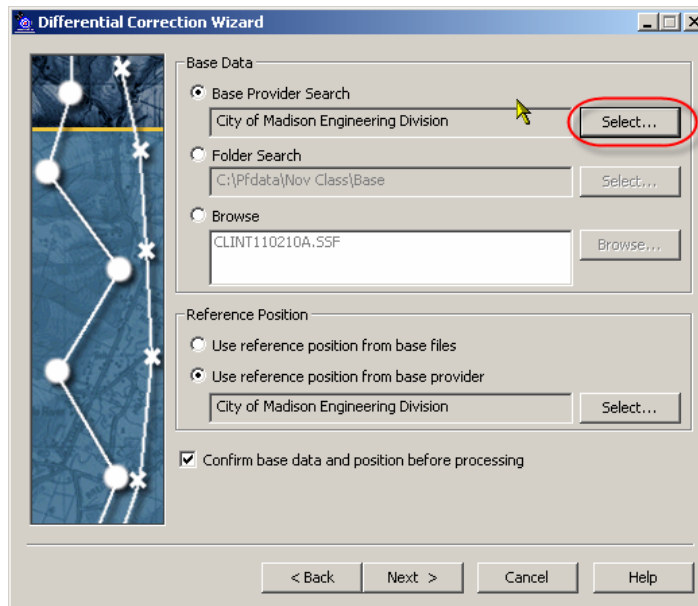


- To add more Reference Stations to the Base Provider Group press the “**Plus sign**”, then Press **UPDATE LIST** button to get the current list from the Trimble website.

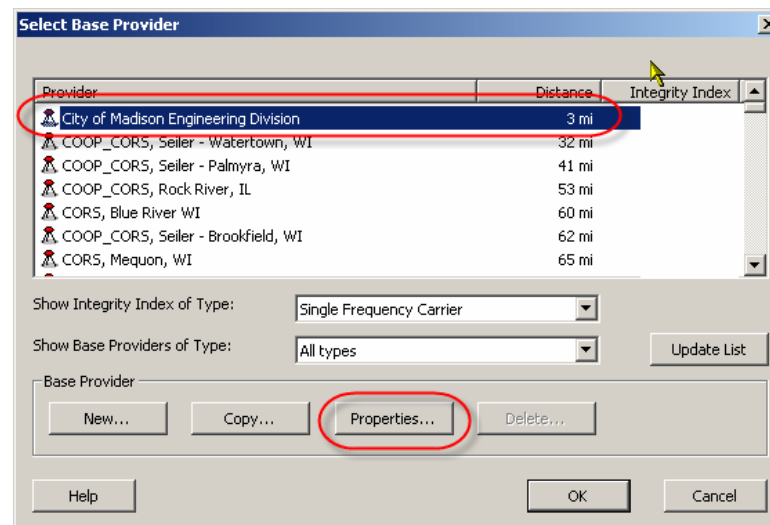


STEP 6 IMAGE

9. If running Standard, under Base Provider Search press **Select** then , Press **Update List** button

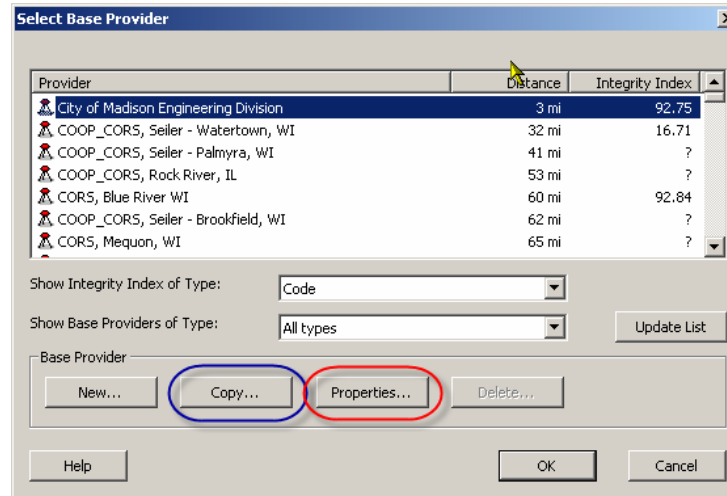


10. Locate *CITY OF MADISON ENGINEERING DIVISION* then press **Properties...** to confirm all BASE PROVIDER information below is correct. If it is correct then Trimble site has updated the online base to match Madison's new (April 2007) file locations. Press OK and continue to process your Data



If it does NOT match continue to next steps to add a Madison "Updated" to your Base Provide list.

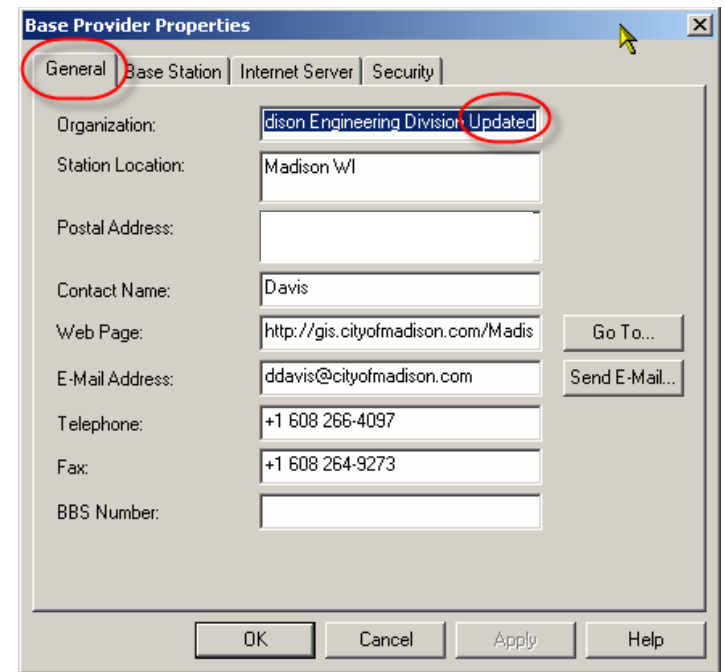
11. Locate *CITY OF MADISON ENGINEERING DIVISION* then press **COPY** to create a “BLUE” duplicate, it will open the properties automatically, set to the information below:



Confirm the following information is correct on all tabs:

**General tab**

- Organization: **City of Madison Engineering Division Updated**  
*(be sure to add this “updated if you had to COPY the Base”)*
- Station Location: **Madison WI**
- Postal address: **1120 Sayle Street**
- Contact Name: **Dave Davis**
- Web Home page: **[http://gis.cityofmadison.com/Madison\\_GPS/index.htm](http://gis.cityofmadison.com/Madison_GPS/index.htm)**
- Email address: **[ddavis@cityofmadison.com](mailto:ddavis@cityofmadison.com)**
- Telephone: **(608) 266-4097**
- Fax: **(608) 264-9273**
- BBS number: **None - no bulletin board for this site**



### Base Station tab

Receiver type: **Trimble 5700 receiver and Zephyr Geodetic antenna with groundplane**

Base station Type: **Trimble GPSBase software**

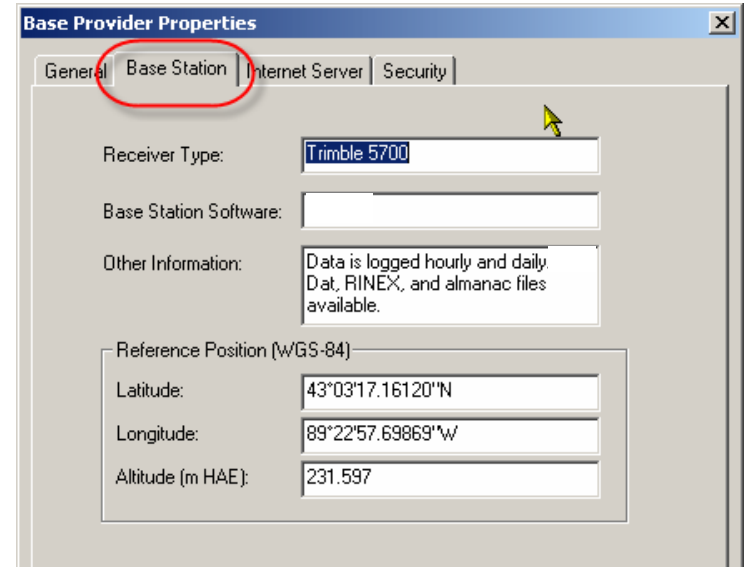
Other information: **Data is logging hourly and daily DAT RINEX and almanac files 13 degrees elevation mask 6.0 PDOP mask**

Select radio button: **Always use the following information**

WGS84 Latitude: **43 03 17.16120 N**

WGS84 Longitude: **89 22 57.69869 W**

Altitude: **231.597**



**NOTE:** The Reference Position is listed as a WGS84/ITRF00 position. This IS different from the published NAD83(1997) datum position. If you are doing H-star processing, you should use the “Always use the following information”, as you are combining this reference station with other stations and to be consistent, Trimble converts all reference positions to WGS84 for use on this page. If you are using single base and are always working in NAD83(1997), select the “use the Reference position from the base file” option and always work in NAD83(1997).

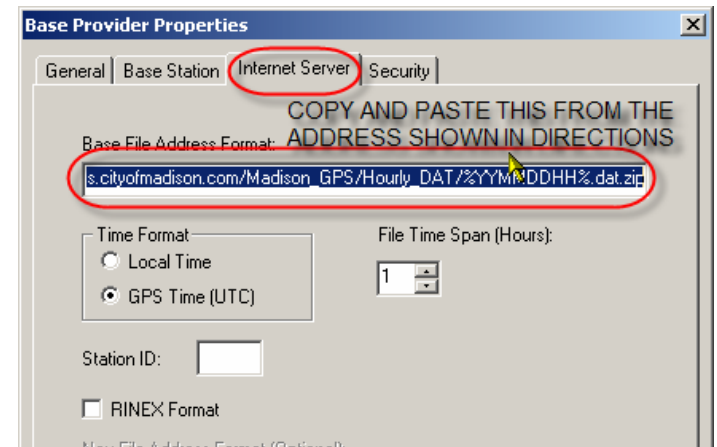
### Internet Server tab

Address format field: Copy the following information shown below -  
(*MUST BE EXACTLY AS SHOWN - Use cut and paste*)

**[http://gis.cityofmadison.com/Madison\\_GPS/Hourly\\_DAT/%YMMDDHH%.dat.zip](http://gis.cityofmadison.com/Madison_GPS/Hourly_DAT/%YMMDDHH%.dat.zip)**

Base Server Type: Select radio buttons **Other** and **GPS time (UTC)**

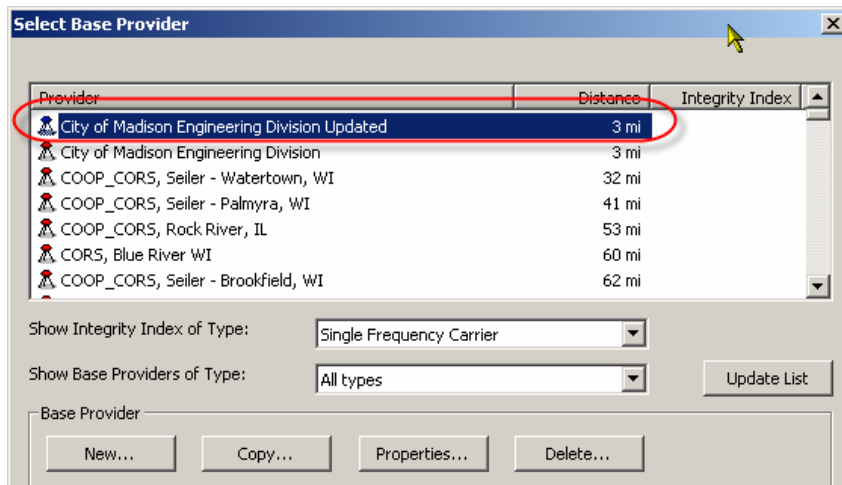
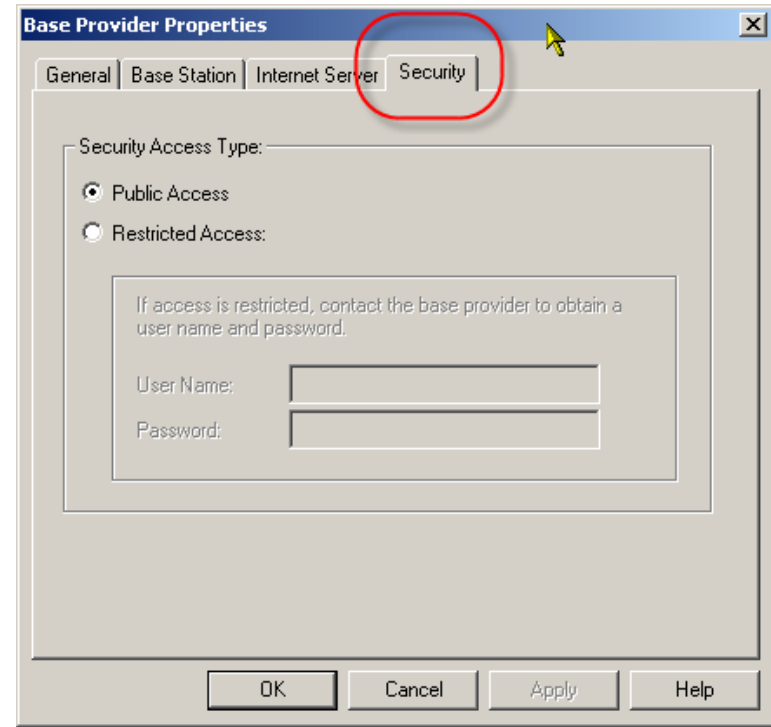
Set File time span to **1 hour**



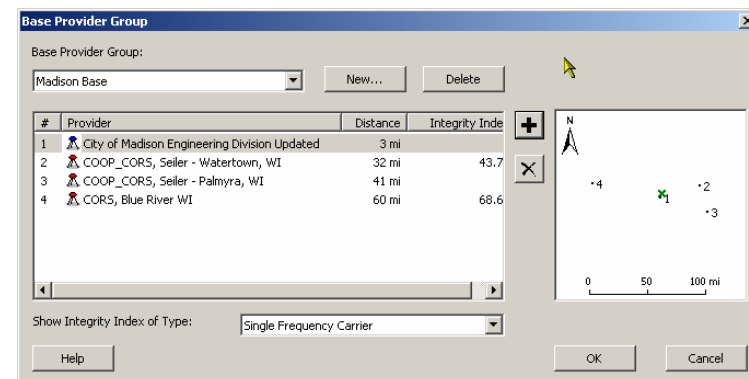
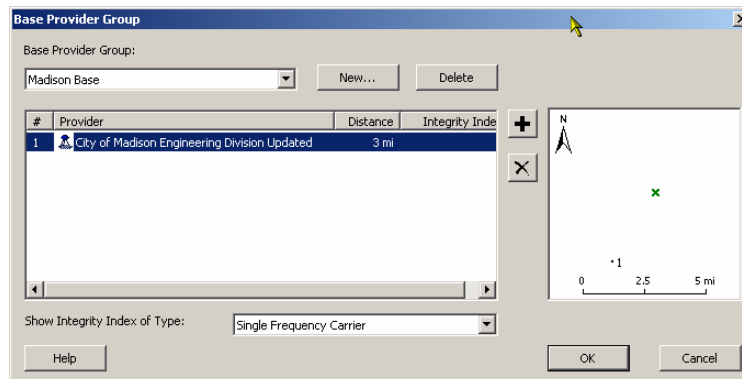
## Security tab

Select radio button **Public access**

12. Press **OK** to close *Base Provider Properties* dialogue box and allow Pathfinder Office to add the UPDATED City of Madison reference station to your current base station list.
13. Highlight the new reference station then press **OK** to add the “City of Madison Engineering Division Updated” to the base group

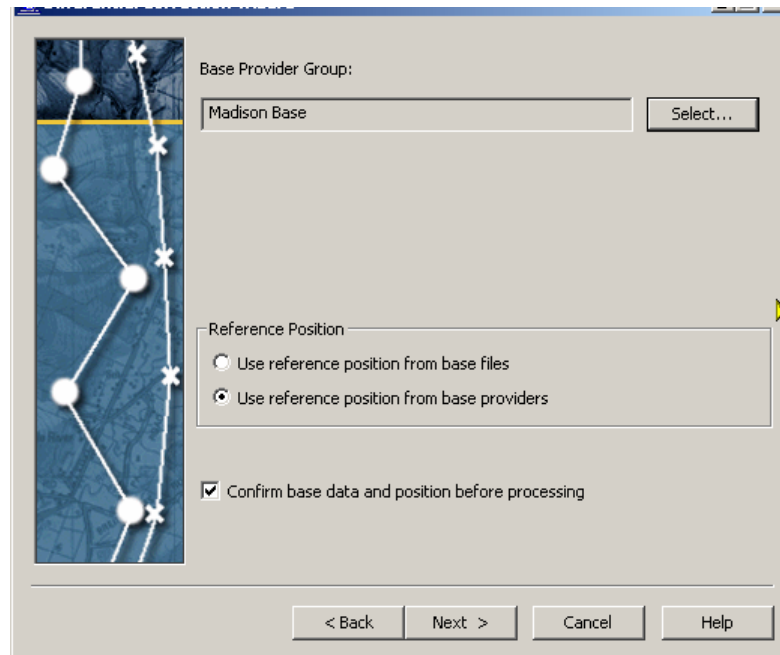


14. To actually retrieve Base Internet files from Madison Base only, press **OK** and continue with differential correction or press the **PLUS SIGN** to add more reference stations to this Base group for H-star processing  
To leave Internet search without retrieving any files press **Cancel**.



15. To use WGS84/ITRF00 position select *Use reference position from base providers*  
To use NAD83(97) Epoch 2002 position select *Use reference position from base files*

To continue with differential correction, Press **NEXT** then **START**  
To exit differential correction without performing a correction press **Cancel**.



16. The newly added "**City of Madison Engineering Division Updated**" reference station will appear in the list until Trimble Pathfinder Office is removed or reinstalled even if you UPDATE LIST as you should do on a regular basis.